



# palette Scrapings



January-February 2010  
NEWSLETTER

## Burnside Painting Group Inc.

Venue: St Matthews Homes Activities Hall, 67 Bridge Street, Kensington  
Postal Address: PO Box 27, Kensington Park SA 5068

### FROM YOUR PRESIDENT

The New Year is upon us, and what an exciting and interesting one it will be for all Burnside Painting Group members. Your management committee has already planned a variety of teaching terms, social nights, exhibitions, competitions, awards and a final Christmas Party. The details are still in the pipeline.

The year 2009, our first year in our new home at the St Matthews Homes Activities Hall in Kensington, was a very happy one. The new premises have suited us very well, and our needs are well met there. The lighting in the hall has been improved over the Christmas holidays, and the lighting in the side room has been excellent all along.

The Annual General Meeting will be on Wednesday 24<sup>th</sup> February, during which the new committee will be elected. I encourage you to attend this meeting, having first

paid your subscription in order to be able to vote.

Subscription time is here again. Please check the Annual Subscription notice on page 15, complete and return it to our Post Office box, with a cheque or money order, or bring it to the first class or painting session you are attending at the beginning of the year. To make things easier for the Treasurer, whenever you are bringing money at the start of the sessions, please put the **correct** amount into an envelope with your name and amount and purpose for the money contained. Then hand it to Maureen Pope when she is ready to collect the money.

The **Continuous Display of Paintings** at the Burnside Community Centre is due to be changed in February, 2010. See the article on page 14 for the dates for selection, hanging and collection, and the Entry Form.

Our plans for a September Spring Atrium Exhibition have had to be changed, and now we are booked in for a **Winter Atrium Exhibition and Annual Awards**, from May 18<sup>th</sup> to June 24<sup>th</sup>, 2010. Selection for this exhibition will be on Monday May 3<sup>rd</sup>. This is considerably earlier in the year than anticipated, so please make sure that you prepare yourselves and your works in time to participate in this.

We are planning to participate in the **South Australia Living Artists Festival** in August, by holding an exhibition and some painting demonstrations for the general public during that time. The exact dates and details are still to be decided. The theme will be "Local Themes, Local Dreams" – incorporating people, places and possibilities in the Burnside area.

Happy painting.  
Pat Yillie.

### CONTENTS

Office Bearers.....	2	Award winners in 2009.....	9
Subscriptions Due.....	2	Art Exhibition Calendar.....	9
Calendar of Events .....	3	Fresh Air Painting Group Programme - 2010.....	10
Annual General Meeting.....	4	Library Corner .....	10-11
Classes Starting January .....	5	David Bunday's Retrospective.....	11-13
November Painting of the Quarter Winners.....	6	Continuous Exhibition .....	14-15
Looking Back- October & November Social Nights.....	8	Annual Subscription Form.....	15
Christmas Function.....	8	Disclaimer and Privacy Policy .....	Back Cover

## THE BURNSIDE PAINTING GROUP INC

**Patron:** The Hon Christopher Pyne MP

**Auditor:** Ms Alison Swart

**Honorary Life Members:** Mrs Beatrice Bills, Mr David Bunday, Miss Patricia Cockshell, Mrs Marjorie Hann, Mrs Beryl Hutton, Mrs Maria Insidioso, Mr Viktor Mednis.

### MANAGEMENT COMMITTEE 2009

<b>President</b>	Pat Wyllie	8364 6036	<b>Vice President</b>	Position vacant	
<b>Secretary</b>	Stella Vanska	8332 3266	<b>Treasurer</b>	Maureen Pope	8338 2807
<b>Minutes Secretary</b>	Jenny Haslam	8331 3573	<b>Exhibition Convener</b>	Pat Wyllie	8364 6036
<b>Social Secretary</b>	Doreen Constable	8223 1636	<b>Publicity Officer</b>	Rosalie McCarthy	8272 2345
<b>Newsletter Editor</b>	Craig Ritchie	8333 3222	<b>Librarian</b>	Julie Lane	8337 8709
<b>Without Portfolio</b>	Vivien Bishop, Carey Dunning, Beverley Robinson, Val Shave.				

**Selection Committee** Pat Cockshell, Pam Hailstone, Maria Insidioso, Jill Argent, Stella Vanska.  
(Reserve – Josie Robinson)

**Exhibition Committee** Pam Hailstone, Jenny Haslam, Merawyn Harrison, Danny Tschopenko.  
Plus the President, Secretary, Treasurer.

### COMMITTEE MEETINGS

**8pm Wednesday January 20<sup>th</sup>** (NOT Monday January 18th)

**8pm Monday Evenings :** 8 Feb, 15 Mar, 12 Apr, 10 May, 21 Jun, 12 Jul, 9 Aug, 13 Sep, 11 Oct, 8 Nov

**PALLETTE SCRAPINGS DEADLINES:** Feb 22, April 22, Jun 22, Aug 22, Oct 22, Dec 15.

## ANNUAL SUBSCRIPTIONS - now Due

What you get for your \$60:

1. Your entitlements as a member of The Burnside Painting Group are as follows:
2. Free admission to all Exhibitions, Lectures and General Meetings of the Group.
3. Use of the Library and of such other property and amenities as the Management Committee may determine.
4. Receive one copy of each issue of the Group's Newsletter and receive the Annual Report and Financial Statements.
5. Submit for selection for exhibition any of his or her works subject to the rules governing such exhibition.
6. Award winners and their works published in the newsletter and on the web site.
7. Vote at any Ordinary or Special General Meeting of the Group.

### PAY BY POST!!!

If you are unable to attend the classes you may pay by cheque or postal order to  
Burnside Painting Group PO Box 27, Kensington Gardens 5068

**See page 15 for the subscription form.** Your receipt will be attached to the next Newsletter.

# CALENDAR OF EVENTS 2010

## MONDAY MORNING CLASSES 10 am to 12 noon.

### Term 1

Tutor: Jean Muir  
Subject: Pastels and other media  
January 25.  
February 1, 8, 15 and 22.  
March 1.  
Cost \$36 for 6 weeks.

### Term 2

Tutor: Boris Franco  
Subject: "Blending Colours for Subtle Effects" - Watercolour Techniques  
March 15, 22 and 29.  
April 12.  
Cost \$24 for 4 weeks.

### Term 3

Tutor: Peter McLay  
Subject: "Paint Along With Peter" – Oil Painting Workshop  
April 19.  
May 3, 10 and 17.  
Cost \$24 for 4 weeks.

### Term 4

Tutor: Carey Dunning  
Subject: New Techniques with Watercolour and Acrylics  
May 24 and 31.  
June 7, 21 and 28.  
July 5.  
Cost \$36 for 6 weeks.

### Term 5

Tutor: Wanda Brabenec  
Subject: All Mediums  
July 12, 19 and 26.  
August 2, 9 and 16.  
Cost \$36 for 6 weeks.

### Term 6

Tutor: Annalise Rees  
Subject: Interpreting Place and Landscape, as a process.  
August 23 and 30.  
September 6, 13, and 20.  
Cost \$30 for 5 weeks.

### Term 7

Tutor: Alan Louis Ramachandran  
Subject: Watercolour Techniques (incl. Tonal Values, Perspective & Composition)  
September 27.  
October 11, 18 and 25.  
November 1, 8, 15, 22 and 29.  
Cost \$54 for 9 weeks.

## WEDNESDAY EVENING CLASSES 8 pm to 10 pm.

### Term 1

Tutor: Julia Wakefield  
Subject: Drawing For The Terrified  
Jan 27.  
February 3, 10, and 17.  
March 3, and 10.  
Cost \$36 for 6 weeks.

### Term 2

Tutor: Kathleen Munn  
Subject: Aspects of Drawing (using drawing as a basis for painting and mixed media approaches)  
March 17 and 31.  
April 7, 14, and 21.  
May 5 and 12.  
Cost \$42 for 7 weeks.

### Term 3

Tutor: Ian Hamilton  
Subject: Working Towards a Body of Work/ Exhibition – any medium  
May 19.  
June 2, 9, 16 and 30.  
July 7, 14 and 21.  
Cost \$48 for 8 weeks.

### Term 4

Tutor: Margaret Tuckey  
Subject: TBA  
August 4, 11 and 18.  
September 1, 8, 15 and 29.  
Cost \$42 for 7 weeks.

### Term 5

Tutor: Ross Morgan  
Subject: Narrative and Expressive Painting – any medium  
October 6, 13 and 20.  
November 3, 10 and 17.  
Cost \$36 for 6 weeks.

## PUBLIC HOLIDAYS

that affect Monday classes.  
Mon 8 Mar – Adelaide Cup Day.  
Mon 5 Apr – Easter Monday.  
Mon 26 Apr – Anzac Day Holiday.  
Mon 14 Jun – Queen's Birthday and Volunteers' Day.  
Mon 4 October – Labour Day

## ANNUAL GENERAL MEETING Wednesday 24 February, at 8 pm.

### WINTER EXHIBITION & ANNUAL AWARDS PRESENTATION

**Burnside Civic Centre Atrium  
May 18 to June 24**  
Selection: 9.30am Mon May 3  
at St Matthews Hall  
Hanging: 9.30am Tue May 18  
Collect unsold works: 4pm Thu June 24

### Launch and Awards 7pm - 8.30pm Thursday May 27

### SALA FESTIVAL EXHIBITION August 2010 (Dates yet to be finalised) "Local Themes, Local Dreams"

**CONTINUOUS EXHIBITION  
Burnside Community Centre**  
Selection: 9.30am Mon Feb 15  
at St Matthews Hall  
Hanging: 10.00am Tue Feb 23 at  
Burnside Community Centre

### MONTHLY SOCIAL NIGHTS

Mar 24 Brian Dobson –  
Demonstration by  
watercolourist & plein-air  
painter.  
Apr 28 Trevor Newman – a realist  
oil painter will talk about  
his art tour of Europe.  
May 26 Craig Bowyer - a  
contemporary artist who  
will do a demonstration.  
June 23 Guest Speaker TBA, &  
Painting of the Quarter.  
July 28 Guest Speaker TBA.  
Aug 25 Guest Speaker TBA  
& Phyllis Kopp Award.  
Sep 22 Guest Speaker TBA,  
& Painting of the Quarter.  
Oct 27 Guest Speaker TBA.  
Nov 24 Guest Speaker TBA,  
& Painting of the Quarter.

### PAINTINGS OF THE QUARTER

Mar 29 Monday at 10am  
Jun 23 Wednesday at 8pm  
Sep 22 Wednesday at 8pm  
Nov 24 Wednesday at 8pm

### PHYLLIS KOPP AWARD Aug 25 - Wednesday at 8pm

# NOTICE OF MEETING

## FORTY SEVENTH ANNUAL GENERAL MEETING OF THE BURNSIDE PAINTING GROUP INC.

The 2010 Annual General Meeting of the Burnside Painting Group Inc. will be held at 8 pm on Wednesday 24<sup>th</sup> February 2010, in the St Matthews Homes Activities Hall, 67, Bridge St., Kensington.

All committee positions are declared vacant, and current office bearers will stand down. Present office bearers may be available for nomination at their own discretion.

Any members wishing to move a resolution at this meeting are reminded that notice in writing, stating clearly the terms of such a resolution, must be received by the Secretary not less than 14 days before the meeting, i.e. by Wednesday February 10<sup>th</sup>, 2010.

The unconfirmed minutes of the Forty Sixth Annual General Meeting, held on February 25<sup>th</sup>, 2009, can be read in the "Palette Scrapings" of March / April, 2009.

(Past issues of Palette Scrapings are available on the internet at [www.burnsidepainting.com](http://www.burnsidepainting.com) and also in the archival box in the locked cupboard at St Matthews Homes Activities Hall.)

-Pat Wyllie.

### 2010 COMMITTEE POSITIONS

All positions for the Management Committee, the Selection Committee and the Exhibition Committee will become vacant automatically at the Annual General Meeting on February 24<sup>th</sup>, 2010. At the AGM members are either re-elected, or newly elected, to the Committee positions.

We need to fill the positions of President as I will be stepping down, and we need a Vice President as we have been without one for 2 years now.

I encourage you all to consider coming on to the committee and to contribute in your own way. Committee work does take time but it brings many rewards, such as feeling useful and wanted, being able to participate in the decisions regarding the direction of the Burnside Painting Group, getting to know other members whom you may not have previously known and having your ideas and contributions valued.

Our committees are hugely important to the wellbeing and running of the Group to ensure that our philosophy of creating and promoting art in the community can continue.

Our Management Committee currently meets once per month at 8 pm on a Monday night for approximately 2 hours. Please think seriously about joining or re-nominating for committee work. We need you.

-Pat Wyllie.

# Annual General Meeting Agenda

Wednesday 24th February 2010

1. President's Welcome.
2. Apologies.
3. Minutes of previous Annual General Meeting.
4. Treasurer's Report.
5. President's Report.
6. All positions declared vacant.  
- Interim Chairperson to take chair.
7. Election of Management Committee members.
  1. President (Elected President takes chair)
  2. Vice President.
  3. Secretary.
  4. Treasurer.
  5. Minutes Secretary.
  6. Exhibition Convenor.
  7. Social Secretary.
  8. Publicity Officer.
  9. Newsletter Editor.
  10. Librarian.
  - 11 – 15 Five members assisting /  
- without portfolio.
8. Election of 5 members of Selection Committee.
9. Election of 5 Assistants to Exhibition Convenor / Exhibition Committee.  
(NOTE: The Exhibition Convenor, President, Vice-President, Secretary, Treasurer, Social Secretary and Publicity Officer automatically belong to the Exhibition Committee.)
10. General Business.
11. Any Other Business.
12. Close of Meeting.

## EARLY WARNING: TERM 2 CLASS

### Wednesday Evening Class

**Kathleen Munn**

*"Aspects of Drawing"*

Commencing Wednesday March 17 for 7 weeks

#### Materials

First lesson: Large sheets of paper and drawing board for support. Bulldog clips. Charcoal (natural and compressed) Erasers and tissues. Workable fixative.

Further sessions: All the above; plus Acrylic paint.

Optional: Crayons, Pastels, Coloured Pencils

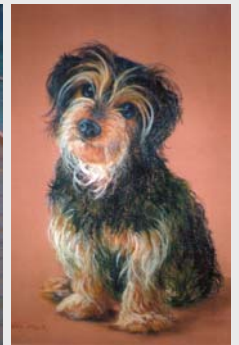
## MONDAY MORNING CLASS TERM 1

### Jean Muir

*“Pastels and other media”*

**Starting January 25th for 6 Sessions**

Jean Muir migrated from Scotland in 1968. She says “I took up painting in 1984 and after a years study at a local TAFE college joined The Henley and Grange Arts Society where I have enjoyed painting for over 20 years. I now tutor classes in pastels and oils and enjoy the challenge of various subjects - mainly figures, portraits and landscapes.” Jean exhibits her work in open and private exhibitions and has received awards for various works.



## WEDNESDAY EVENING CLASS TERM 1



### *‘Drawing for the Terrified’*

#### Julia Wakefield

Printmaker, Illustrator and Studio Artist at the Hahndorf Academy

**Starting January 27th for 6 Sessions**

**Are you interested in a beginners’ drawing workshop that is totally non-threatening?**

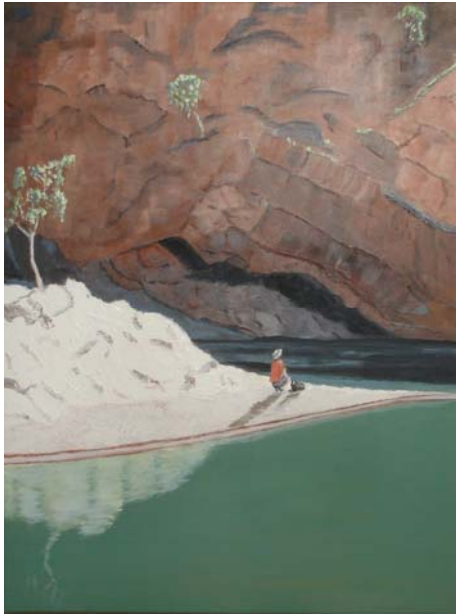
**Do you feel artistically challenged? creatively atrophied?**

This is a tried and tested course designed to give you the rules of drawing in a way that you can recognise them, adapt them and consciously break them, as you become more and more confident about why your drawing looks 'wrong' and how to fix it. At the same time you will be given exercises designed to help you tune into your underused 'right brain', which will help to increase your drawing skills. At the end of the course you will have a thorough knowledge of the theory behind drawing methods, and an informed understanding of how to correct your mistakes.

**What to bring:** HB, B & 2B pencils & paper, eraser, sharpener, ruler

# November 2009 Painting of the Quarter Winners

Experienced Section  
Vivien Bishop



Novice Section  
Anthony Spadavecchia



## PLEIN AIR PICNIC SUNDAY NOVEMBER 29, 2009

Pam Hailstone arranged for our Group to paint in the charming garden of her son, at Crafers. The weather was dull and inclined to rain, but nevertheless four of us arrived and started on our works.

It was such a pleasure to be out in the peace and quiet of the country, with beautiful sights and smells.

Thank you Pam for giving us the chance to paint and draw in such a delightful spot.

Pat Wyllie.

## OUR WEB PAGES

[www.burnsidepainting.com](http://www.burnsidepainting.com)

Palette Scrapings in full color

Colour Photographs

Members artwork showing world-wide

## Looking Back SOCIAL NIGHTS

Wednesday 25th November  
2009

A watercolour demonstration by  
**Alan Louis Ramachandrin**



Wednesday 28th October 2009  
**Peter Chaplin**

About 30 people attended our Social Night on 28 October to see multi-award winning artist, Peter Chaplin, demonstrate watercolour technique.

Peter studied at the South Australian School of Art and became a graphic designer, before turning in 1992 to fine art, working mainly in oil and his first love, watercolour. He has been inspired by landscapes in Adelaide and the Fleurieu Peninsula, Melbourne and Europe.



Peter provided many useful tips on how to produce fresh and vibrant work:

- >be precise with your drawing but aim to keep your work free and fresh;
- >plan your attack - create mood and drama through strong directional light and shadow
- >leave white paper showing through to emphasise highlights
- >control paper and dampness, using wet in wet or dry brushing as appropriate
- >be positive with your brush work - be bold and don't scrub
- >practice practice practice! Try and try again until you get the results you want

Peter showed step by step techniques to produce a vibrant watercolour painting of a house interior, providing plenty of inspiration and information for all present. We thank Peter for a most enjoyable and interesting evening.

-Rosalie McCarthy

## Our Merry End-of-Year Gathering At Gillberries Cafe

The weather on the afternoon of 29th November, after Adelaide's scorching heat wave, was mild and kind to us as members slowly arrived around 4 p.m. in Party finery for our Burnside Painting Group break-up.

The main room at Gillberries Cafe, Dulwich, was clear and spacious, especially for us, as we moved around greeting and complimenting each other. Having discarded our old and splattered painting pinafores and put on our social finery, and along with a scattering of husbands and male partners, also in comfortable casual wear, true to form, we relaxed and enjoyed ourselves. We took in the interesting atmosphere of art photographs on the walls, and the shelves of spices, jams and vinegars proffered by Gillberries.

As we sipped our welcoming drink, conversation was not wanting; plans for Christmas and family were no doubt exchanged as our voices mingled higher and higher and, intermittently, a raucous laugh would erupt!

Gillberries Staff saw that we were enticed outside by sunshine seeping through the canopy over the adjoining patio, and they brought out delicious assorted foods, such as sandwiches, olives, cheeses, salami and fruits and placed them on the white tablecloth. An ivy hedge on two sides gave us privacy and an intimate environ.

A few small tables and chairs were drawn up for comfort, although some stood on marathon legs and the atmosphere became intensely convivial as we circulated and interchanged in small groups. More tasty goodies kept appearing, such as fish cakes, grilled chicken kebabs, pumpkin and spinach squares, so that Gillberries certainly saw to it that we were well-fed.

At about 6 p.m. the faintest spots of rain slowly began to spatter. Conversation, petering out too, on well-fed stomachs and our spirits primed for the coming Christmas season, we began to disperse. There were our profuse thankyou's to Gillberries Staff and yells of "Happy Christmas" and "See you, next term" ringing in the air.

Thankyou Gillberries, thankyou Doreen and thankyou everyone for a lovely and anticipated Painting Group get-together!

Merawyn

# Looking back at 2009: Award Winning Paintings

## Painting of the Quarter

### FIRST QUARTER



Experienced: Rose Groves

Novice: Margaret Rothenberg

### SECOND QUARTER



Experienced: Rosalie McCarthy

Novice: Andrew Bischoff

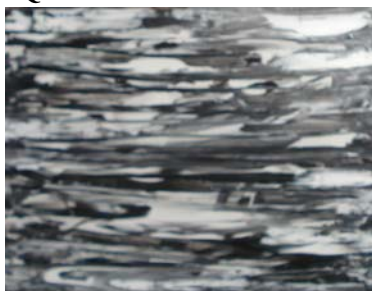
### THIRD QUARTER



Experienced: Pam Hailstone

Novice: Masako Haga

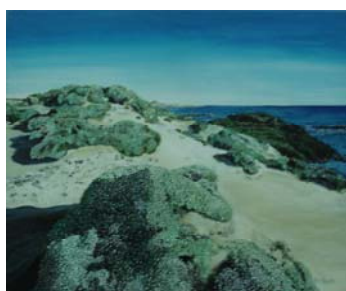
### FOURTH QUARTER



Experienced: Vivien Bishop

Novice: Anthony Spadavecchia

### PHYLLIS KOPP AWARD



1st: Margaret Rothenberg

2nd: Margaret Rothenberg

## Annual Awards

### PATRON'S AWARD



1st: Nadyne Morgan

2nd: Jill Argent

### PRESIDENTS AWARD



1st: Merawyn Harrison

2nd: Jenny Haslam

### ENCOURAGEMENT AWARD



Robyn McKean

### HONOURABLE MENTION



Vivien Bishop



Andrew McGowan

### HONOURABLE MENTION



Julie Lane



Rose Groves

# S.A. ART EXHIBITIONS CALENDAR 2010

## JANUARY 2010

**Port Rotary Art Show** \$3,500 1st, \$1,000 2nd  
Jan 2 - Jan 7, 9.30am to 5.30pm daily (Sun: 12.30pm to 5.30pm)  
At Portside Christian Centre, 1 Causeway Rd, Ethelton  
Entry closed on Nov 15, 2009.  
[www.portadelaide.rotaryaust.org](http://www.portadelaide.rotaryaust.org)

**Victor Harbor Art Show**  
Jan 15 - Jan 23, 10am to 8.30pm daily.  
At Marquee, Warland Reserve, Victor Harbor.  
Entry closed on Friday Nov 13, 2009.  
[www.victorharborartshow.com](http://www.victorharborartshow.com)

## FEBRUARY 2010

**Limestone Coast Art Prize** \$5,000  
Feb 19. Keith Institute, Heritage St. Keith SA  
Entries close Friday 22 Jan 2010.  
Entry Form from "PEAK" at 8756-4243

## March 2010

**Peterborough Art Prize** \$1,500  
Mar 26 - Apr 5 Peterborough Town Hall, Peterborough  
Entries Close March 23rd.[www.prac.org.au](http://www.prac.org.au)

## APRIL 2010

**Laura Art Prize**  
April 9-11, Courthouse/Gallery, Laura  
[www.laurafolkfair.com](http://www.laurafolkfair.com)

**Clare Rotary Art Exhibition** \$15,000 Prizes  
April 10 - May 10 Clare Town Hall, Main North Rd, Clare  
Entries close April 10 [www.clarerotary.com](http://www.clarerotary.com)

**Flagstaff Hill Rotary Exhibition** \$6,900 Prizes  
April 10-17 Primary School Black Rd. Flagstaff Hill  
Entries close March 19  
[www.rotarnet.com.au/flagstaffhill](http://www.rotarnet.com.au/flagstaffhill)

**Campbelltown Art Show & Sale** \$9,000 Prizes  
April 16-25, 172 Montacute Rd, Rostrevor  
Entries close March.  
[www.campbelltown.sa.gov.au/goto/artshow](http://www.campbelltown.sa.gov.au/goto/artshow)

## JULY 2010

**Waterhouse Natural History Art Prize** \$114,000 Prizes  
Mid July to Early Sept at South Australian Museum  
Entries Close about end May \$33  
[www.thewaterhouse.com.au](http://www.thewaterhouse.com.au)

**Rotary Blackwood Art Show** \$4,500 Prizes  
July 10, Blackwood High School  
entries close June 10  
[www.rotarnet.com.au](http://www.rotarnet.com.au)

**Walkerville Art Show**  
July 2010 Walkerville Town Hall,  
66 Walkerville Terrace Gilberton  
Email: [jharley@walkerville.sa.gov.au](mailto:jharley@walkerville.sa.gov.au)

## AUGUST 2010

**SA Living Artist's Festival (SALA)**  
August 2010 at over 500 venues all over SA.  
[www.salafestival.com](http://www.salafestival.com)

## SEPTEMBER 2010

**Fleurieu Biennale**  
Various venues in McLaren Vale. Dates yet to be announced.  
Usually the last 3 weeks in November.  
Total Prizes \$90,000  
[www.artprize.com.au](http://www.artprize.com.au)

**Port Pirie Art Prize \$4,750 total prizes**  
Sept 10 - Oct 10 at Port Pirie Regional Gallery.  
Entries close Aug 10  
[www.pprag.org](http://www.pprag.org)

**Quorn Show**  
Sept 12 210  
Entries:(Check web site for details)  
[www.sacountryshows.com/pages/sa-country-shows/quorn-show.php](http://www.sacountryshows.com/pages/sa-country-shows/quorn-show.php)

**Adelaide Show - Art Purchase Exhibition**  
During Show, Adelaide Showground, Wayville  
Entries close July 2010.  
[www.theshow.com.au](http://www.theshow.com.au)

## OCTOBER 2010

**Adelaide Cathedral Art Show**  
October 10 at St Peter's Cathedral, North Adelaide.  
Entries close August 10, forms available mid-June  
[www.stpeters-cathedral.org/artshow](http://www.stpeters-cathedral.org/artshow)

**City of Whyalla Art Prize**  
Oct 10-Nov 10, Middleback Theatre, Whyalla  
Entries August 10 Fee \$30  
Total Prizes \$25,000  
[www.countryarts.org.au](http://www.countryarts.org.au)

**Hahndorf Streetscape Art Competition**  
Oct 10, Butterfly Creations, Hahndorf  
Entries: Must be painted on site.  
Total Prizes \$1,500  
[www.dcmtbarker.sa.gov.au](http://www.dcmtbarker.sa.gov.au)

**Heysen Prize for Interpretation of Space**  
Oct 10 - Nov 10, Hahndorf Academy, 68 Main St, Hahndorf  
Entry Aug 10, \$25  
Total Prizes: \$7,000  
[www.hahndorfacademy.org.au](http://www.hahndorfacademy.org.au)

## DECEMBER 2010

**Prospect (self) Portrait Prize** \$6,500 total prizes  
Dec 11 - Jan 12 Prospect Art Gallery,  
corner Main North Rd & Thomas St.  
Entries close Sept 3  
[www.prospect.sa.gov.au](http://www.prospect.sa.gov.au)

NOTE: This column is a regular feature of Palette Scrapings. It is designed to encourage and help members to enter in art competitions. If you know of any exhibitions that are not listed here please contact the editor or any committee member with any details you have.

# FRESH AIR PAINTING

## ROYAL SOUTH AUSTRALIAN SOCIETY OF ARTS

### FRIDAY MORNING FRESH AIR PAINTING GROUP PROGRAM – 2010.

Members of the Burnside Painting Group are encouraged to come to the following venues, on Friday mornings. Get there at about 9.30 am, and bring your lunch and a drink, as well as your drawing and painting equipment. Learn new skills, make new friends, and have some fun. No money involved – all free!

**Jan 8, 15, 22.**

Olive grove, East Terrace, Adelaide.  
Parking between Angus St. and Wakefield St.

**Jan 29, Feb 5, 12.**

Linear Park, Willow Bend Reserve, Ascot Ave, Vale Park.

**Feb 19, 26, March 5.**

Botanic Gardens / Botanic Park.

**March 12, 19, 26.**

Port Adelaide. Park near the Lighthouse.

**April 2, 9, 16.**

Adelaide City Bridge, King William Street. Park where you can.

**April 23, 30, May 7.**

Clarendon Gorge near Clarendon oval.

**May 14, 21, 28.**

West Terrace Cemetery. You can park in the cemetery.

**June 4, 11, 18.**

Kingston House, Cameron Ave, Kingston Park. Enter via Singleton Rd.

**June 25, July 2, 9.**

Cnr. Nile St. and Augusta St. Glenelg. Meet at church at end of Augusta St.

**July 16, 23, 30.**

Dennis Morrissey Park, Rostrevor. St. Bernards Rd. south of Montacute Rd.

**August 6, 13, 20.**

Northern end of Military Rd off Burbridge Rd, West Beach, near Torrens outlet.

**August 27, Sept 3, 10.**

Port Adelaide, Riverview Tavern, 3, Elder Rd, Birkenhead. (opp Lighthouse.)

**Sept 17, 24, Oct 1.**

Corner North East Rd and Perseverance Rd., Tea Tree Gully.

**Oct 8, 15, 22.**

Norton Summit, Colonial Rd – Nicholl Rd.

**Oct 29, Nov 5, 12.**

Urrbrae House, Claremont Ave, off Fullarton Rd, Urrbrae.

**Nov 19, 26, Dec 3.**

Semaphore Jetty.

**Dec 10, 17.**

Morialta Conservation Park, Morialta Falls Rd.

**Christmas 17<sup>th</sup> Dec.** Bring a plate of food to share.

**Contacts:** Pat Wyllie 8364 6036.

Coralie Armstrong 8389 2373

## ***LIBRARY CORNER***

It is pleasing to see that the library has been so well used over the last 12 months. For those of you who are new members, books or magazines may be borrowed for a period of 3 weeks, for a sum of 20cents per item. There is a limit of 3 books at a time, and details of each book, that is: title, author, name of borrowing member, and date of borrowing, should be entered into the exercise book in the left-hand side of the library cupboard. When the items are returned, the date returned should be entered into the same exercise book. Care should be taken to try and return the books to their appropriate location in the cupboard, so that it is easier for subsequent borrowers to find whatever book they are looking for - when undertaking stocktaking this week, I found 2 watercolour books in amongst the stacks of magazines - if someone had wanted to borrow these particular books, they would not have thought to look in this area.

On a lighter note, the process of stocktaking highlights to me the wealth of information available to us through our library. There is a huge variety of knowledge at our disposal:

Top shelf, left hand cupboard: 2 stacks of old soft cover art books, covering many varied topics, from abstraction, to portraits, trees, still life to name but a few. The very bottom shelf holds the magazine series "Draw it, Paint it", with many tips and hints for the relative beginner. The lower shelves house several piles of different magazines: "The Australian Artist", "The International Artist", "The Artist", "The American Artist" and "The Pastellist". All provide a wide source of inspiration for us.

Above the magazines, on the left, is a collection of The Abbey Library Art Encyclopedias, dealing with the works of 11 of the great masters.

In the right hand side of the library cupboard, on the top shelf, is a collection of small books covering the story of painting, the old masters and some of the impressionists. There are 13 small hardcover sketchbooks of local areas, including Norwood & Kensington, Magill, Yorke Peninsula and Walkerville.

In the shelves below, are books dealing with

*(Continued on page 11)*

# DAVID BUNDEY RETROSPECTIVE EXHIBITION

David, a life member of the Burnside Painting Group, and now in his 80s, had a two day retrospective exhibition of approximately 400 of his works in his former home on December 12<sup>th</sup> and 13<sup>th</sup>, organized by his daughters Anne and Jennifer. Also for sale was some of his drawing and painting equipment such as brushes, paper, boards, canvases, pastels, an easel, paints and fixative, and Australian Artist magazines.

David joined the Burnside Painting Group shortly after its inception in the 1960s. He has held most of the committee positions over the years, and is particularly remembered for his organizing abilities when he was in charge of the exhibitions, outdoor painting days, and painting trips. He also arranged and acted in the Christmas Social Nights, with comedy skits on the stage at the Ward Hall.

In real life David was a Civil Engineer. However he started drawing and painting in his thirties, and then he started wood carving as well. Apart from

devoting much of his time to the Burnside Painting Group he loved to go on regular trips with his painting buddies to the Flinders Ranges. Many of his paintings reflect his times up there, and these are popular with his buying public. He uses watercolour, gouache, pen and wash, pastel, acrylic and oils.

David still attends Burnside Painting Group functions, especially on Monday mornings, and has recently completed some beautiful works in pastel and watercolour.

It was a great pleasure to see his work gathered together in one place, and to marvel at the extent of one man's output over the years. Congratulations, David.

Pat Wyllie.

*(Continued next page)*



*(Continued from page 10)*

Australian Art (also more on the bottom shelf), the skill of drawing and how to develop it, described in many various publications, of particular note, is "Drawing on the Right Side of the Brain" by Betty Edwards. Other drawing books deal with faces and expressions, anatomy, life drawing and pen and ink drawing, along with many others.

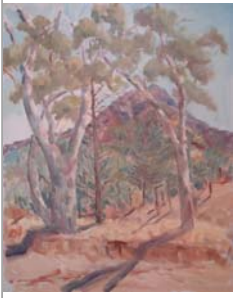
General painting techniques, keys to painting fruit and flowers, painting pictures from photographs, composition and use of colour are but a few of the subjects on offer; more specialised techniques for each medium are covered in separate sections, the largest being the selection of books on watercolour, probably because this is generally deemed to be the most challenging of media. So if your

interest is in landscapes, buildings, flowers or still life, all of these are well covered in the variety of books available. "Making Colours Sing" by Jean Dobie deals with transparent watercolour, mixing interesting greys and greens; "Taking Risks with Watercolour" by Shirley Trevena demonstrates a less traditional approach, with some amazing results.

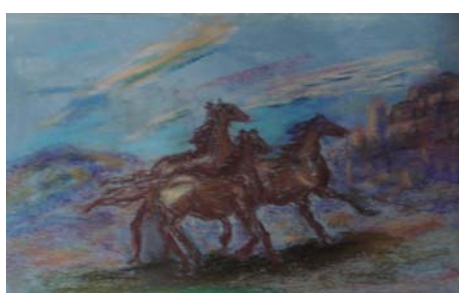
There are many great examples of art masterpieces to be found on the bottom 2 shelves, both old masters and impressionists - plenty to inspire - and books on impressionism, expressionism.....so make time to take advantage of this wonderful resource next year!

Julie Lane, librarian

# DAVID BUNDEY RETROSPECTIVE EXHIBITION



# DAVID BUNDEY RETROSPECTIVE EXHIBITION



## CONTINUOUS EXHIBITION OF PICTURES AT BURNSIDE COMMUNITY CENTRE

Many members would already know that our Group was invited to display some of our pictures in the Burnside Community Centre on a permanent basis. We began our first exhibition there in April 2007, with a hanging of 18 (now 26) of our pictures. They are in the entrance to the Community Centre, the nearby hallway, the hallway outside the pool room, and in the dining room. Do make sure that you go along to have a look at them. This Centre is used constantly by a variety of people in the community, and is open from Monday to Friday, 9am to 5pm. It is an excellent chance to display our work, to bring The Burnside Painting Group to the notice of the general public, and to attract new members to our Group.

We change the exhibition every 3 to 4 months, so that over a period of time everybody has a chance to display their work. The **next changeover date** will be Tuesday February 23<sup>rd</sup>, 2010.

So far we have sold 10 paintings since the start of this exhibition. If an artist sells a painting, they will be able to replace it with another of their own paintings, to continue to be hung until the end of that particular time segment.

There is a selection process. You are all invited to submit two pictures for hanging, framed to accepted professional practice. This invitation includes everybody who already has a picture in the current showing. Please read the **Entry Conditions** very carefully before you submit your work.

**Selection Day** is on Monday February 15<sup>th</sup>. Please bring your pictures, with your entry form to the St Matthews Homes Activities Hall at 9.30am, and the selectors will begin their selecting at 10am. You will then need to take your picture home again on that day.

**Hanging Day** is on Tuesday February 23<sup>rd</sup>, at 10am at the Burnside Community Centre. Please bring your selected paintings there punctually.

**Collection Day** for the pictures which are currently hanging in the Community Centre will be on Tuesday February 23<sup>rd</sup>, at 10am, the same day as the hanging for the next exhibition. Please be punctual.

Pat Wyllie.

### THE BURNSIDE PAINTING GROUP INC. CONTINUOUS EXHIBITION OF PICTURES AT THE BURNSIDE COMMUNITY CENTRE ***CONDITIONS of ENTRY and SALE***

1. Exhibitors must be financial members of The Burnside Painting Group.
2. Paintings must be the artist's original work, not copies of another person's work or their photographs. (Copyright laws must not be breached.)
3. All Paintings will be subject to selection and must be for sale. If a work is not accepted, reasons for non-selection will be recorded by the Selectors for reference by the Artist. To avoid disappointment please ensure that you are aware of the Selection Committee's decision on your work prior to the opening of the Exhibition.
4. All works selected will be for hanging – Maximum size including frame – 90x 80 cm.
  - (a) **Framed** and ready for hanging to accepted professional practice.
  - (b) **Unframed** i.e. wooden stretcher with hanging facility to accepted professional practice.
5. Artists may submit two pictures each.
6. There will be no entry fees.
7. There will be no gallery duties.
8. Insurance for members' paintings is not provided by The Burnside Painting Group, or by the City of Burnside. All reasonable care is taken, but the Group does not accept responsibility for any damage or loss.
9. The Burnside Painting Group will take a 25% commission on any paintings sold.
10. The Committee reserves the right to hang paintings wherever space is available.
11. The exhibitor agrees that photographs of their work may be taken for use by The Burnside Painting Group in its newsletter, web site and promotional material.
12. Paintings must be delivered with a completed entry form at the times advertised.
13. Part A and B of the entry form must be filled in. **Each painting** must be identified by **Part B** of the entry form, with all details correctly filled in and firmly attached to the **bottom left hand corner** on the **back**.
14. The selectors will place a red dot on the back of all paintings that are **NOT** selected.

# 2010 ANNUAL SUBSCRIPTIONS ARE NOW DUE

What you get for your \$60:

Your entitlements as a member of The Burnside Painting Group are as follows:

1. Free admission to all Exhibitions, Lectures and General Meetings of the Group.
2. Use of the Library and of such other property and amenities as the Management Committee may from time to time determine.
3. Receive one copy of each issue of the Group's Newsletter and receive the Annual Report and Financial Statements free
4. Submit for selection for exhibition any of his or her works subject to the rules governing such exhibition.
5. Vote at any Ordinary or Special General Meeting of the Group.

**PAY BY POST!!!** Your receipt will be attached to the next Newsletter.

Cut here -----

## ANNUAL SUBSCRIPTION FORM

Mrs/Ms/Mr ..... **FIRST NAME:**..... **SURNAME:**.....

**ADDRESS:** .....

..... **POST CODE:**.....

**TELEPHONE: Home:** ..... **Mobile:** .....

**EMAIL:** .....

**AMOUNT: \$60 per annum + Donation if you wish \$** \_\_\_\_\_

**Signature:** ..... **Date:** ...../...../.....

Cheque or money order to: The Treasurer, The Burnside Painting Group Inc., PO Box 27, KENSINGTON PARK SA 5068



## THE BURNSIDE PAINTING GROUP INC. CONTINUOUS EXHIBITION OF PICTURES AT BURNSIDE COMMUNITY CENTRE

### *Entry Form*

**Name:** \_\_\_\_\_ **Phone:** \_\_\_\_\_ **Signature:** \_\_\_\_\_

(Block letters) First Name Last Name

I accept the Conditions of Entry and Sale.

Painting Title (Block letters)	Medium	Size (cm or inch) width x height	Selling Price \$	Selectors Comments



### Burnside Painting Group Continuous Exhibition Burnside Community Centre

Firmly attach this to your picture on the  
**bottom left hand corner on the back.**

**Artist's Name:** \_\_\_\_\_

**Painting title:** \_\_\_\_\_

**Medium:** \_\_\_\_\_

**Selling Price \$** \_\_\_\_\_

**A red dot on the back of a painting means NOT selected**



### Burnside Painting Group Continuous Exhibition Burnside Community Centre

Firmly attach this to your picture on the  
**bottom left hand corner on the back.**

**Artist's Name:** \_\_\_\_\_

**Painting title:** \_\_\_\_\_

**Medium:** \_\_\_\_\_

**Selling Price \$** \_\_\_\_\_

**A red dot on the back of a painting means NOT selected**

### DISCLAIMER

Views and opinions expressed in articles in Palette Scrapings do not necessarily reflect the views of The Burnside Painting Group. While every effort is made to ensure the accuracy of articles printed, responsibility is not accepted for any errors they may contain that are out of the control of The Burnside Painting Group.

### OUR PRIVACY POLICY

A member's personal information collected by The Burnside Painting Group, for example name, address and telephone number, will only be used for forwarding of the Palette Scrapings and relevant information concerning the organisation of The Burnside Painting Group. This information will not be shared, sold or given to any third party without the consent of the member. Any emails will be treated as above. However, any information sent by email will be at the risk of the sender, and the organisation of The Burnside Painting Group will not be held responsible for any unintended use or disclosure of this information.

**Contact The Editor:** All letters to the editor and other material for publication in the newsletter can be emailed to [burnsidepainting@gmail.com](mailto:burnsidepainting@gmail.com) or mailed to PO Box 27, Kensington Park 5068.

### SURFACE MAIL

Print post approved  
No. 503038/0004

POSTAGE  
PAID  
AUSTRALIA

---

**BURNSIDE PAINTING GROUP INC.,**  
If undelivered please return to  
The Editor  
PO Box 27, Kensington Park SA 5068



**Central Artist  
Supplies**

9 to 5, 5 days / Sat 9 to 12.30pm

quality artist materials - gift ideas  
watercolour, oils, acrylics, pastels  
papers, board and canvases stretched  
Moleskines, easels, palettes and equipment wraps

45 Osmond Tce., Norwood located in the Adelaide Central School of Art

Phone/fax **Greg Hanisch 8364 2088**  
email: [mail@centralartistsupplies.com.au](mailto:mail@centralartistsupplies.com.au)